

PCI LASTOGUM

Waterproof, flexible protective coating under ceramic coverings in showers and bathrooms

Areas of application

- Liquid area waterproofing to be applied by roller, brush or trowel.
- For indoor use.
- For walls and floors.
- For applications not covered under the official test certificates according to ZDB leaflet "Bonded waterproofing", edition 2005, for moisture resistance grades 0, A 01 and A 02.
- Resistance class A1 in accordance with the test principles to issue an official test certificate.
- For wet areas not exposed to pressurized water, such as bathrooms, showers in residential buildings, hotels, old people's homes and hospitals.
- On moisture-sensitive, absorbent substrates, e.g. plasters, plaster slabs, gypsum fibre

Features and benefits

- Waterproof, protects moisture-sensitive substrates.
- Flexible, compensates tensions, deformations of the substrate, variations in temperature and vibrations.
- Crack-bridging, high security even with subsequent cracks in the substrate.
- Ready-to-use, easy to apply by roller, brush or trowel.
- Two-coloured, for easier visual control of the layer thickness.



boards, plaster boards, wooden chipboards, anhydrite screeds in moist and wet areas subject to usual domestic use.

- On absorbent mineral substrates, e.g. concrete, screed, render, aerated concrete, cementitious levelling compounds for walls and self levelling compounds such as Mastertop 528.
- Resistant to lime water, ensures bonding between protective coating and mortar if the adhesive bed is constantly submerged in water.
- Solvent-free, no harmful risk to the environment, can be used without any risk to health.
- With official Test Certificate issued by the Technical University of Munich for interior waterproofing under PCI bedding mortars.

PCI LASTOGUM

Technical data

Material

Material base	solvent-free synthetic resin dispersion
Components	1-part
Control colour	red and/or grey
Density	Approx. 1.5 g/cm ³
Packaging – PCI Lastogum red / grey	25 kg plastic pail
Shelf life	6 months when stored in dry conditions and protected from frost.
Storage	no permanent storage in direct sunlight or over +40°C

Application

Minimum consumption at required dry layer thickness of 0.5 mm Thickness of wet film (min. 2 layers)	approx. 1.1 to 1.2 kg/m ² * (Δ approx. 0.8 litre / m ²) approx. 0.7 mm
Coverage	25 kg pail is sufficient for approx. 21.5 m ²
Working temperature	+5°C to +40°C (substrate temperature)
Evaporation time after 1st coat**	approx. 1 hour
Evaporation time after 2nd coat** ready for subsequent tiling	approx. 1 to 2 hours

* Consumption might increase with rough substrates.

** At +23°C and 50% relative humidity. Higher temperatures reduce, lower temperatures increase the times given.

Preparation of substrate

The substrate must be sound, dry (cement screed 4%, anhydrite pourable screed 0.5%, measured with the CM meter), clean and free from oil, grease and other residues which should be removed by sand-blasting, brushing or shotblasting (Blastrac) if necessary. The practically smooth surface must not have any

honeycombs, gaping cracks or ridges. Prime gypsum-based substrates and plaster boards beforehand with undiluted PCI Primer Gisogrund. Absorbent mineral substrates should be primed with PCI Primer Gisogrund, diluted 1 : 1 with water. Prime dry, tightened chipboards with PCI Wadian. The primers must have cured prior to the application of PCI Lastogum.

PCI LASTOGUM

Application procedure

Apply undiluted PCI Lastogum by roller (lambskin roller), brush (wall brush, float), or trowel to the substrate to cover the entire area. A minimum of two coats is required.

Place PCI Pecitape 10x10 and/or PCI Pecitape 35x35 over pipe culverts and floor drains, in corner joints and floor/wall junctions press PCI Pecitape 120 into the first coat of PCI Lastogum. Any projecting edges of the fabric are covered by the second coat.

Any further coat is applied when the first coat is dry. For easier control of coverage it is recommended to apply the first coat with PCI Lastogum red and the following coat(s) with PCI Lastogum grey. If the previous colour is visible the thickness of the applied coat is too thin and should be avoided.

When PCI Lastogum has cured tiles can be laid with PCI Nanolight, PCI Flexmörtel PCI Flexmörtel-Schnell on vertical and horizontal areas. Calibrated natural stone should be laid with the adhesives for natural stone PCI Carralight or Mastertile 30.



1. Priming: Prime absorbent mineral or gypsum-based substrates and plaster boards with PCI Gisogrund.



2. Apply undiluted PCI Lastogum (red) to the substrate as a first protective coating to cover its entire surface.



3. Fix PCI Pecitape120 with PCI Lastogum (red) in corner joints and floor/wall junctions.



4. Place PCI Pecitape 10x10 over the pipe connection protruding from the wall and cover with PCI Lastogum (red)



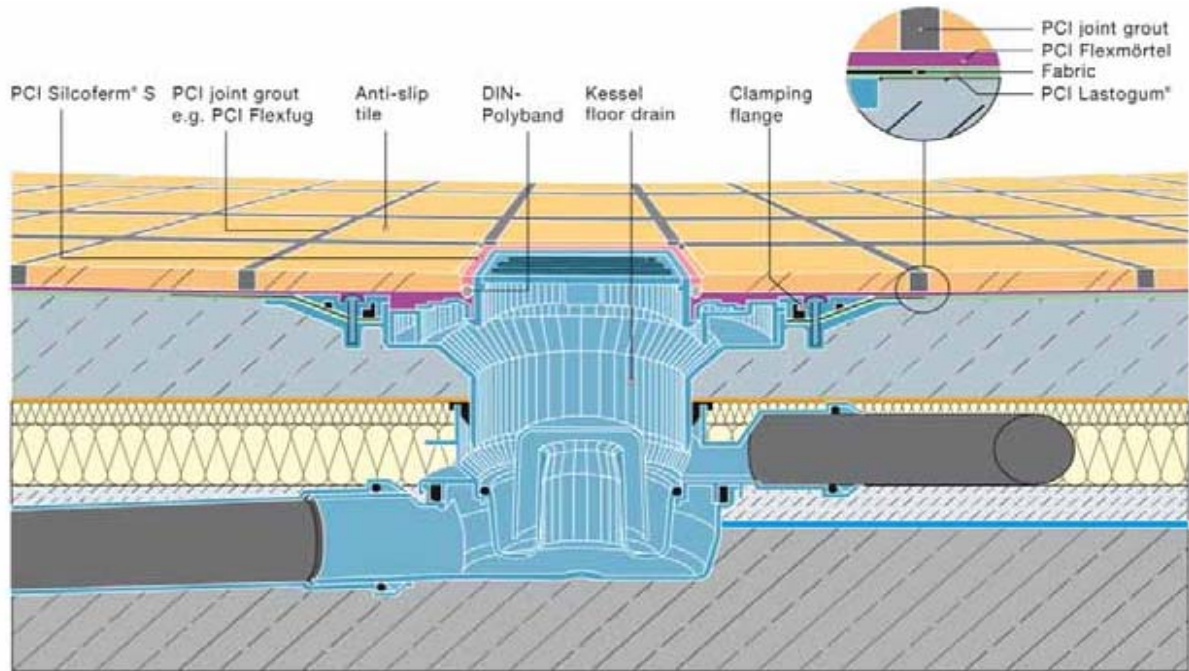
5. After an evaporation time of approx. 1 hour apply the second protective coating with PCI Lastogum (grey). The first coat of PCI Lastogum (red) should not be visible, otherwise another layer might be necessary.



6. When the waterproofing PCI Lastogum has cured tiles can be laid.

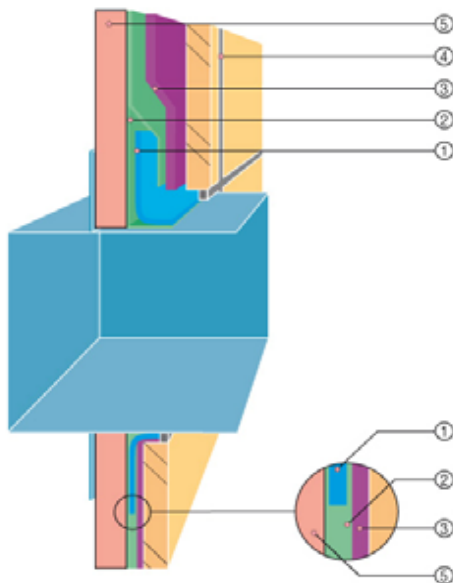
PCI LASTOGUM

Detail: Waterproofing of a floor drain



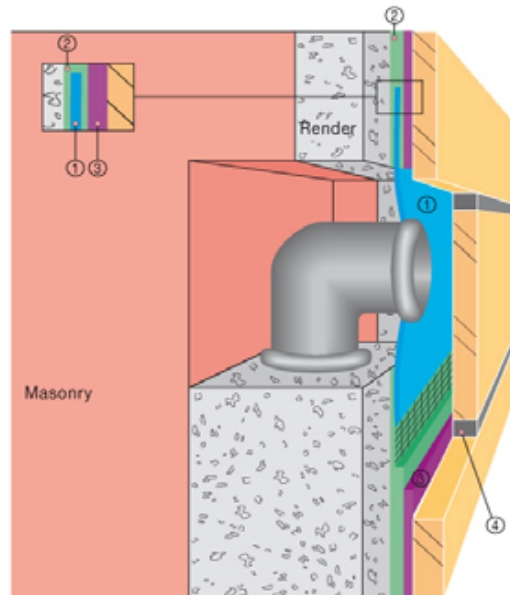
Detail: Installation of a waterproof wall mounted housing for fittings (e.g. Hansa DAL)

- ① PCI Pecitape® 35 x 35
- ② PCI Lastogum®
- ③ PCI Flexmörtel
- ④ PCI joint grout, e.g. PCI Flexfug
- ⑤ Gypsum plasterboard



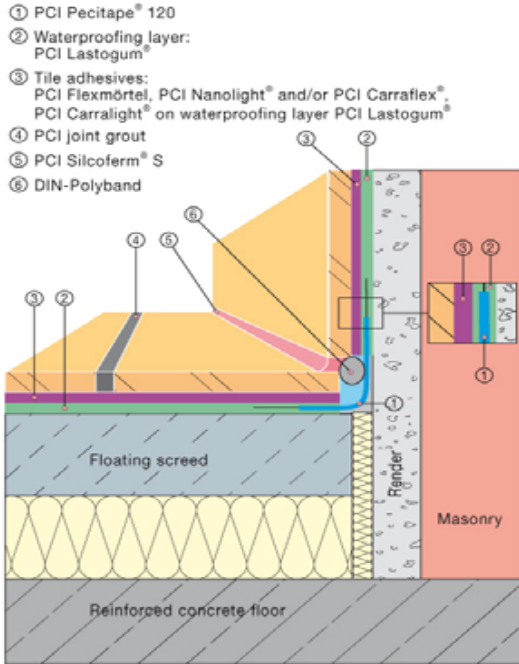
Detail: Pipe culvert / wall

- ① PCI Pecitape® 10 x 10
- ② Waterproofing layer: PCI Lastogum®
- ③ Tile adhesives: PCI Flexmörtel, PCI Nanolight®, and/or PCI Carraflex®, PCI Carralight® on waterproofing layer
- ④ PCI joint grout



PCI LASTOGUM

Detail: Floor / wall connection



Please note

- PCI Lastogum is not recommended for outdoor use and waterproofing in swimming pools. For these purposes use the crack-bridging waterproofing slurry PCI Seccoral.
- Do not apply PCI Lastogum at substrate temperatures below +5°C and above +40°C.
- The protective coating can be exposed to foot traffic after 2 hours at the earliest when applying two coats.
- To enable an easier control of the layer thickness it is recommended to apply the first coat of PCI Lastogum in red and the second coat in grey. The first coat must not be visible.
- In-wall fittings which can be integrated into the waterproof protective coating PCI Lastogum by means of PCI Pecitape 35x35 is available

from e.g. Hansa or DAL. Assimilable thinbed floor drains are available e.g. from Kessel.

- The waterproofing gasket PCI Pecitape 10x10 must waterproof around the pipe (not around the plug which will be removed later), otherwise the pipe must be extended beyond the waterproof area by inserting a spacer.
- To avoid acoustical bridges the connection joint at the edge of floating screeds must be free from mortar and waterproofing slurry. It is recommended to leave at least 10 mm in horizontal and vertical direction at the wall/floor connection free from PCI Lastogum (see detailed drawing). Possible contamination of the barrier strip should be thoroughly removed before inserting the waterproofing tape.
- Tools should be washed with water immediately after use. Once the product has cured it can only be removed by mechanical means.
- If the surrounding area is sensitive to moisture waterproofing must be applied also below and behind the shower base and bathtub.

Health and safety

General information on dispersion products

Do not allow dispersion to dry on the skin. Remove dried dispersion with soap and water. Protect eyes where there is risk from splashing. In case of contact with eyes thoroughly flush with water. If the eye irritation does not ease off within a few minutes seek prompt medical attention.

For further information refer to the Material Safety Data Sheet.

10/2006 BASF_CC-UAE revised 03/2010

Whilst any information contained herein is true, accurate and represents our best knowledge and experience, no warranty is given or implied with any recommendations made by us, our representatives or distributors, as the conditions of use and the competence of any labour involved in the application are beyond our control.

As all BASF technical datasheets are updated on a regular basis it is the user's responsibility to obtain the most recent issue.