

MASTERFLEX[®] 612

Swelling gasket in paste form

Description

MASTERFLEX[®] 612 is a one component, moisture curing pre-polymer which is reswellable when in contact with water, suitable for the permanent sealing of construction joints in concrete structures.

Advantages

- Simple use
- High swelling capacity in contact with water
- Highly resistant to chemicals and saline liquids (see chemical resistance table)
- Good adhesion to dry and moist surfaces (concrete, steel and plastics)
- Reversible swelling process

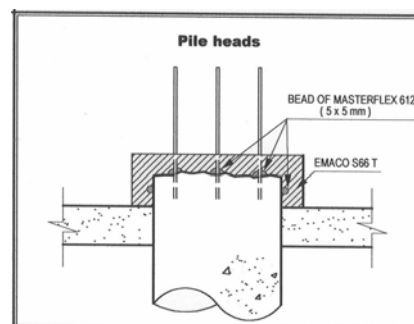
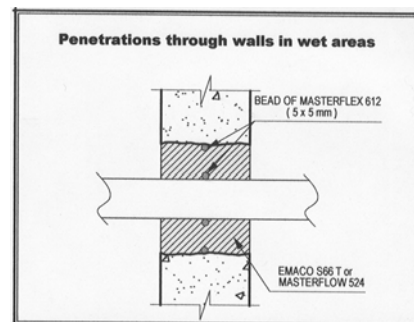
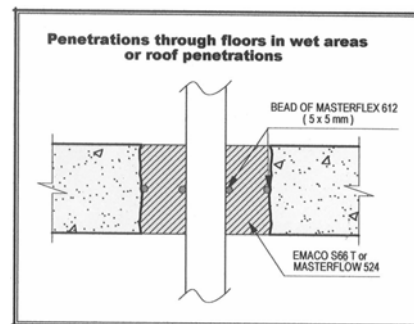
Field of applications

- Construction joints of every kind (fig. 1).
- Connecting joints in sheet piling (Fig. 2) or diaphragm walls.
- Sealing of bell butt joints.
- Wall penetration for metal, plastic and concrete pipes (Fig. 3), cable bushing.
- Bonding of MASTERFLEX[®] 610 swelling waterstops on very uneven or rough surfaces. MASTERFLEX[®] 610 swelling waterstops are pressed strongly into the paste bead.
- Surrounding steel reinforcement bars on pile heads.

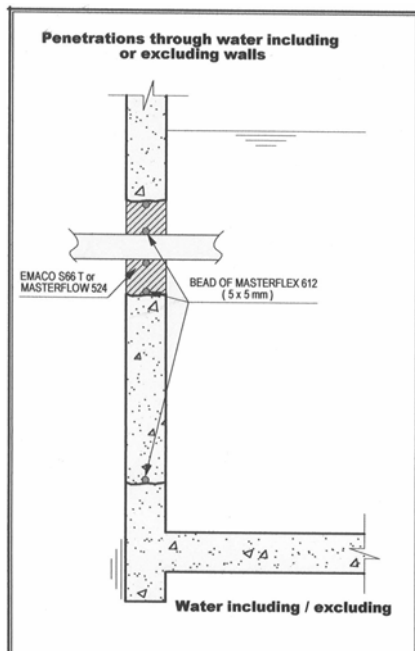
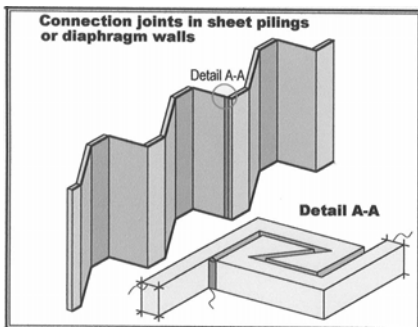
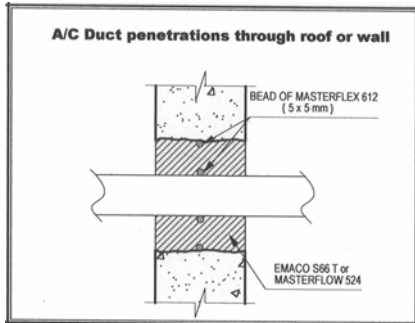
Uses

- MASTERFLEX[®] 612 swelling paste is supplied in ready to use cartridges.
- The substrate must be free of grease, dust and loose particles. Do not apply on frozen surfaces.
- Hardening prior to concreting is min. 24 hours.

- The swelling paste should be protected against premature swelling.
- When concreting, take care to ensure that the expanding paste is fully covered by concrete.



MASTERFLEX[®] 612



Packaging

310ml cartridge

6 x 310ml cartridges per carton

147 cartons = 882 cartridges per pallet

Available on special requests:

600ml cartridge

12 x 600ml sausages per carton

Directions for use

- The paste can be applied with a suitable hand-held caulking gun.
- Puncture and lift the double layer bottom of the cartridge, remove the pellets.
- Puncture the opening of the cartridge and free entire cross section.
- Cut the nozzle diagonally to obtain an opening of 6-10mm and place the cartridge in the caulking gun.
- Direct the caulking gun along the surface at an angle of 45° extrude paste evenly and press the paste bead against the substrate.
- For large jobs and ease of application we recommend pneumatic guns or mechanical guns with high gear.

Properties

- On contact with water, the cured swelling gasket paste swells and seals the construction joint against water penetration.
- An increase in volume of up to around 250% produced by storage of water in the paste's molecular structure.

Layer thickness

Usually 5-10mm

Temperature

+5° to +40°C

MASTERFLEX[®] 612

Low temperatures will render more difficult to extrude and retard the hardening process of the paste. During cold weather we recommend to store the paste in warm conditions prior to use.

Yield

Depending on substrate approx. 5m per 310 ml cartridge.

Chemical resistancy

Test Liquid	Stability	Swelling
Unleaded fuel	resistant / discolouring	~ 45%
Gasoline	resistant / discolouring	~ 2%
Toluene	resistant	~ 140%
Xylene	resistant	~ 85%
Methanol 50%	resistant	~ 400%
Isopropanol 50%	resistant	~ 500%
N-methylpyrrolidone	limited resistant / discolouring	~ 615%
Ethylacetate	resistant	~ 195%
Methylisobutylketone	resistant	~ 85%
Acetic acid 10%	limited resistant	~ 150%
Formol 36%	resistant	~ 500%
Sulphuric acid 10%	resistant	~ 190%
Sulphuric acid 20%	resistant	~ 210%
Sulphuric acid 26%	resistant	~ 25%

Storage

Store in a well enclosed, cool and dry place.

Shelf life

MASTERFLEX[®] 612 has a shelf life of 9 months (stored at +5°C to +25°C) if stored in a well enclosed, cool and dry place.

04/2002 BASF_CC-UAE revised 01/2003

Whilst any information contained herein is true, accurate and represents our best knowledge and experience, no warranty is given or implied with any recommendations made by us, our representatives or distributors, as the conditions of use and the competence of any labour involved in the application are beyond our control.

As all BASF technical datasheets are updated on a regular basis it is the user's responsibility to obtain the most recent issue.

BASF Construction Chemicals UAE LLC

P.O. Box 37127, Dubai, UAE

Tel: +971 4 8090800

Fax: +971 4 8851002

www.basf-cc.ae

